

Creating enduring
value and certainty

**Expect
More**

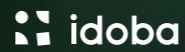


ABOUT PERENTI

Perenti is an ASX listed, diversified mining services group with interests in contract mining, drilling services, mining services and technology solutions. Headquartered in Perth and with offices and operations across four continents, we employ more than 11,000 fantastic people who are focused on creating enduring value and certainty for our investors, clients, people and the communities in which we operate.

EMPLOYEES ~11,000	MINING FLEET ~1,500	PROJECTS 100+
CONTINENTS 4	COUNTRIES 13	COMMODITIES 9

OUR BUSINESSES



SUSTAINABILITY

At Perenti, we recognise that we have a critical role to play in helping the world transition to a more sustainable future. A future that demands more of us. Quite simply, for our business to succeed, sustainability must be embedded in everything we do.

We have identified three key areas we consider imperative to our success in embedding sustainability:

- Caring for our People and Communities
- Valuing the Environment and Enabling the Energy Transition
- Acting Ethically and Responsibly.

Aligned with these imperatives, we have five sustainability priorities where we will be focussing our effort:

- Preventing life changing events
- Creating safe and respectful workplaces
- Achieving gender balance
- Accelerating decarbonisation
- Partnering with our communities.

EMBEDDING SUSTAINABILITY IN EVERYTHING WE DO



Leveraging Perenti's full breadth of capability and collaboration with industry leaders.

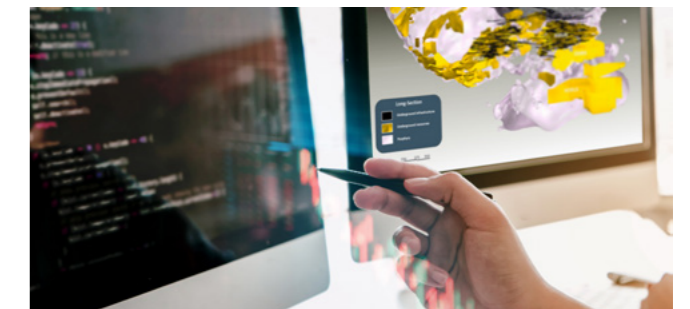


ELECTRIFICATION



Perenti is leading the industry with a comprehensive investment in electric mine solutions. We are the only contract miner taking part in the Electric Mine Consortium and have partnered with leading global technology company ABB to support net zero emissions targets for underground and open-pit mines. Additionally, our underground mining company Barminco has partnered with our clients and OEMs to trial electric heavy machinery across a number of Western Australian sites during 2023 and 2024. These trials enable the collection of real-time, on-site data, which further informs the progression of Battery Electric Vehicles and the future of electric mining.

TECHNICAL SOLUTIONS



Drawing capability from across Perenti's businesses, the Mining Technical Performance team offers a uniquely comprehensive set of technical solutions across four key pillars: Governance, Operational Support, Embedded Professionals and Studies. Our consulting services are agile, and thorough – they can be engaged with singular focus, or combined to unearth maximum efficiencies and facilitate alternate growth pathways. A growing team of qualified technical professionals, we bring a wealth of insight, innovation, and mining experience across surface and underground operations.

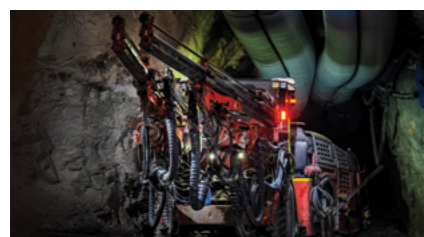
CONTRACT MINING



barminco.com.au

Barminco is a global leader in high-speed development and mining production - bringing more than 30 years of experience. We are one of the world's largest hard rock underground mining services companies, and operate across Australia, North America and Africa (as Barminco and African Underground Mining Services).

HIGH SPEED DEVELOPMENT



We utilise state-of-the-art electric hydraulic jumbo drilling machines equipped to the highest standards and with best operators in the industry to fast track decline development enabling early access to underground reserves for our clients.

PRODUCTION



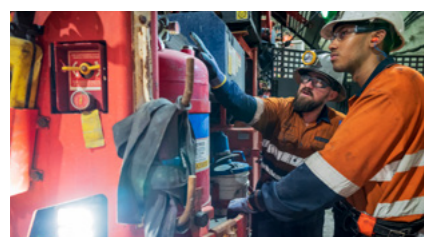
We provide timely and accurate ore delivery through our production mining services which include longhole drilling, charging, blasting, loading, haulage, backfill and installation of mine services.

VERTICAL DEVELOPMENT



Our Rhino 100 raise borers deliver efficient small-diameter vertical development. These compact machines are fully mechanised, self-contained, electro-hydraulic, mobile, and designed specifically for cost efficient and timely slot raising and backreaming in an underground environment.

EQUIPMENT SUPPLY AND MAINTENANCE



With our state-of-the-art maintenance facility and highly skilled personnel, we set the industry standard for reliability and performance. This ensures that our fleet consistently delivers reliable and productive results for our clients. By conducting all maintenance in-house, we maintain complete control over the quality and timing of repairs and maintenance.

TRAINING



Our training centres - located in Perth and Botswana - are well-resourced, purpose-built facilities with dedicated trainers, coordinators and programs. These unique facilities replicate the underground environment. With a focus on operational skills, they utilise technology to offer customised virtual-reality scenarios across various underground roles.

MINING TECHNICAL PERFORMANCE



Mining Technical Performance Team offers a uniquely comprehensive set of technical solutions across four key pillars: Governance, Operational Support, Embedded Professionals and Studies. Our consulting services are agile, and thorough - they can be engaged with singular focus, or combined to unearth maximum efficiencies and facilitate alternate growth pathways. A team of qualified technical professionals, bringing a wealth of insight, innovation, and mining experience across surface and underground operations.

CONTRACT MINING



amsgh.com

Established more than 30 years ago, AMS is one of the largest surface mining services companies in Africa. We provide a total surface mining service and operate one of the largest fleets throughout Africa complemented by a depth of operating and maintenance knowledge. Equipped with an embedded mining logistics and supply chain operation, AMS invests in high-quality equipment, innovative technology, and a well-trained local workforce. We're your one-stop-shop, with skilled operators and equipment you can rely on.

PLANNING



Our in-house technical team can provide and optimise a total surface mining service. We can reduce cost per BCM through design, production benchmarking, fleet selection and maximising utilisation, effective scheduling, and by evaluating and optimising haulage routes.

MINE DEVELOPMENT



We have extensive experience establishing, operating, and maintaining full mine-related infrastructure for long and short-term facilities. Our full-service offering includes in-house and local expertise that cover: infrastructure layout and optimisation, EPCM, logistics, and development and training.

PRODUCTION



When it comes to production mining services, AMS are industry leaders in drill and blast, load and haul, grade control, pit dewatering, mobile crushing, mine closure and rehabilitation services; as well as asset management and equipment hire.



DRILLING SERVICES



perenti.com

Is one of the world's largest drilling services contractors globally with the experience to drill the deepest and most complex holes in the mining and exploration industries. Working for tier one miners through to junior explorers, we provide clients with the highest quality service and samples in the shortest possible time.

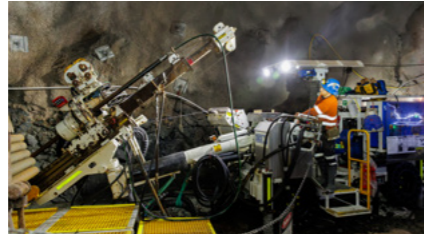
DDH1 DRILLING



DDH1 Drilling specialises in diamond core drilling services, extracting samples from depths of up to 3,000m. Pioneers in deep-hole directional drilling, DDH1, can facilitate controlled deviations, allowing precise targeting and course correction during drilling activities. Their service offerings extend to specialist engineering services, mine infrastructure drilling, reverse circulation drilling, and remote exploration services.

ddh1drilling.com.au

SWICK MINING SERVICES



Swick revolutionised the underground diamond drilling industry with its innovative mobile drill rig design. Swick offers the underground market the most powerful, smallest-footprint mobile drill rig known for reliability, boosting productivity and meeting project goals throughout Australia, the US and Europe. Swick is a leading mineral drilling company that provides solutions with a focus on quality, safety, and productivity in underground diamond drilling, including grade control, resource definition, deep hole exploratory drilling (DeepEX), underground mine infrastructure drilling, and Swick Engineering.

swickmining.com

AUSDRILL



Ausdrill is renowned for innovative rig designs and the ability to drill in challenging terrains. Offering drilling services across various commodities, Ausdrill provides land and lake diamond drilling, deep navigational diamond drilling, reverse circulation drilling, air core drilling, drill and blast services, wet and dry blast hole rig hire, geotechnical services, ground support, and wall stabilisation.

ausdrill.com.au

RANGER DRILLING



Ranger Drilling specialises in reverse circulation and diamond drilling, primarily focusing on the iron ore industry. Ranger offers reverse circulation drilling, grade control, diamond core drilling, deep hole directional diamond drilling, small diameter hydro and monitoring bore drilling, Geotech and VWP installation and grouting, hands-free drilling solutions, industry-leading automated equipment complemented with MDP/MWD digital on-rig data collection.

rangerdrilling.com.au

STRIKE DRILLING



Strike Drilling is a highly regarded exploration drilling company with a strong reputation for efficient operations and reduced environmental impact in remote locations. Strike provides a comprehensive array of services, including near-mine and remote exploration, high-capacity air core drilling, reverse circulation drilling, sumpless RC/AC drilling, grade control, and water bore drilling.

strikedrilling.com.au

MINING SERVICES



btpgroup.com.au

With more than 35 years of industry experience, BTP is your total solutions provider for mining equipment and parts. Our services are customisable with comprehensive in-house expertise to manage the entire process. Everything we do is geared to deliver greater machine availability at a high quality and low cost for our clients.

EQUIPMENT HIRE



Whether you need a single machine for a short period or an entire fleet for the life of your project, our well-maintained fleet provides back-up you can rely on. Our equipment is expertly sourced via reliable global supply networks, then inspected and tested in-house by our qualified personnel.

MACHINE REBUILDS



BTP is renowned for providing high-quality machine rebuilds that incorporate: access to our range of new and reconditioned parts; comprehensive machine system testing and adjusting; as well as certification and warranty that is equivalent or better than the OEM. Hire options are also available to support your operations during the rebuild process.

RECONDITIONED PARTS



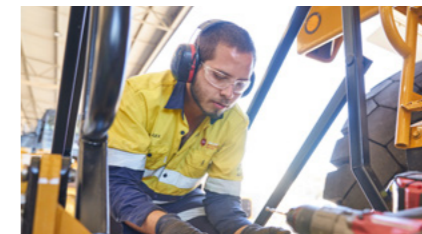
BTP offers an extensive range of quality parts and components to keep your machines moving. Our reconditioned parts are built to a high standard by our skilled team of specialists, leveraging our years of experience and innovation to ensure optimal performance.

HYDRAULICS, ENGINEERING & FABRICATION



With a specialist engineering department, workshop and industry-leading equipment, BTP can refurbish components back to OEM specifications as well as create custom aftermarket parts and solutions that will increase compatibility, reliability and longevity.

FIELD SERVICE & SITE SUPPORT



Our qualified service teams deliver on-site planned servicing and maintenance; shutdown coordination, diagnostic testing and breakdown repairs, machinery inspections and reports. We can also provide qualified resources to provide leave cover and backfill vacancies.



logisticsdirect.com

Logistics Direct is a leader in moving mining equipment and goods throughout Africa and anywhere in the world. With over 25 years' industry experience, we move more than 8,000 tonnes of equipment throughout Africa annually.

Our specialist services include:

- Freight forwarding - import/ export using ground, air and sea freight
- Customs brokerage and customs clearance
- Storage and transit distribution
- Vessel and aircraft chartering
- Project cargo management
- Cross-trade facilitation.



supplydirect.net

Supply Direct is your complete supply chain management specialist provider, covering every facet of mining supply and logistics. As Africa's largest mining capital equipment company, headquartered in South Africa, we offer superior buying power and a single point of contact for all your supply needs, from large-scale equipment to everyday parts and consumables.

Our specialist services include:

- Mine procurement and supply
- Logistics management.

IDOBA



idoba.com

idoba is a digital transformation company dedicated to solving mining's toughest challenges. We do this by combining deep mining expertise, data insights and innovative technology.

We believe in the power of co-creation, working closely with our clients to rethink, reimagine and transform the mining sector. Together, we're creating a better future for mine operators and the talented people who work in the industry.

CO-CREATE A BETTER FUTURE WITH IDOBA

Mining companies are navigating a landscape of significant shifts in business and operating complexity. Rising costs and geopolitical uncertainty add to the difficulty of designing and delivering the required transformation.

idoba exists to help. Born from the synthesis of fresh thinking, deep expertise and our powerful DiiMOS™ platform, we work with clients to rethink, reimagine and transform their operations. Through our capabilities in modelling, simulation, navigation and optimisation, we enable optimised decision-making solutions to deliver innovation, insight and value.

Whether you're driving an ESG change programme across your worldwide operations or dewatering a single mine, idoba has the solution for you.

Our experts are on hand to scope, model and manage the most complex projects from pre-feasibility through to rehabilitation, and from mine planning through to decarbonisation and digital transformation.

THE DiiMOS™ PLATFORM

DiiMOS™ is an integrated decision optimisation platform designed to solve complex problems in your operations.

Model your operation for enhanced visibility, navigate with predictive insights, simulate scenarios for effective planning, and optimise processes to make the best decisions.

DiiMOS™ is the answer to complex problems.



orelogy™ orelogy.com

orelogy is a specialist mine planning and mining technical consultancy with multi-commodity expertise across resource sector project development and management, mine planning and cost modelling optimisation, as well as pre-feasibility and feasibility studies. orelogy has a track record of delivering significant value across a range of global projects and commodities.



OUR PEOPLE & CULTURE

We have a global workforce of more than 11,000 world class employees and our culture is underpinned by our Principles that drive the way we work, our actions and our behaviours, in every interaction and task we perform. By living these Principles, we will deliver our Purpose to create enduring value and certainty for our clients, investors, people and the communities in which we operate.



OUR PRINCIPLES

NO SHORTCUTS	NEVER WASTEFUL	WALK IN THEIR SHOES	SMARTER TOGETHER	ENABLE TOMORROW
We never compromise our standards. We strive for the best in everything we do and continue to raise the bar in safety, performance and transparency every day.	We make every moment count. We operate as efficiently as possible. We plan effectively, make full use of our assets and always spend our money wisely.	To win new clients, keep existing clients and to ensure everyone benefits, we have to really know them – not just who they are and what they're asking for, but what really matters to them.	None of us is as smart as all of us. By valuing our diversity, working together, sharing knowledge and supporting each other, we're capable of exceptional things.	We actively embrace change, enabling new technologies and smarter ways of working, so the mine of tomorrow is safer, more productive and more reliable than ever before.







Capability 20
Statement 24

ABN 95 009 211 474

**Expect
More**

CORPORATE AND HEAD OFFICE

Level 4, William Square, 45 Francis Street, Perth WA 6003 Australia
+ 61 8 9421 6500

perenti.com